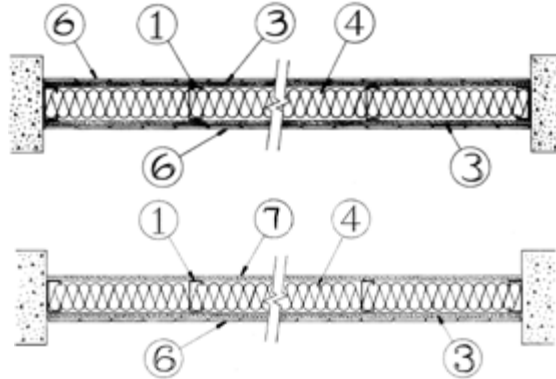


Design No. U442
Nonbearing Wall Rating — 1 HR.



1. **Studs** — Channel shaped, 2-1/2 in. wide by 1-1/4 in. deep with 3/16 in. folded back return flange legs. Fabricated from No. 20 MSG (0.0329 in., min. bare metal thickness) galv steel. Max stud spacing 16 in. OC. Studs to be cut 3/8 to 3/4 in. less than assembly height.
2. **Floor and Ceiling Runners** — (Not Shown) — Channel shaped runners, 2-1/2 in. wide by 1-1/4 in. deep, fabricated from No. 20 MSG (0.0329 in., min. bare metal thickness) galv steel. Attached to floor and ceiling with fasteners, 24 in. OC max.
3. **Cementitious Backer Units*** — 1/2 or 5/8 in. thick, applied vertically or horizontally with vertical joints centered over studs and staggered one stud cavity on opposite sides of studs. Horizontal joints need not be backed by framing. Fastened to studs and bottom runners with the uppermost screws palced 1/2 in. to 2 in. below the bottom edge of the leg of the top runner with corrosion resistant 1-1/4 in. long chamfered, ribbed wafer head screws with a minimum head diameter of .400 inch, spaced 8 in. OC. Joints covered with glass fiber mesh tape and latex modified portland cement mortar or Type I organic adhesive.
4. **Batts and Blankets*** — Min 2-1/2 in. thick mineral wool insulation batts, friction-fitted between studs.
5. **Bond Coat for Setting Tile** — Latex modified portland cement mortar or .1 Type I organic adhesive applied with a notched trowel.
6. **Ceramic Tile** — 1/4 in. thick, joints filled with grout.
7. **Gypsum Board*** — 5/8 in. thick with square or tapered edges, applied vertically with vertical joints centered over studs and staggered one stud cavity on opposite sides of studs. Fastened with 1 in. long, Type S-12 screws spaced 8 in. OC along the vertical edges and 12 in. OC in the field, and fastened to runners with screws spaced 8 in. OC.

AMERICAN GYPSUM CO — Type AGX-1 or AG-C.

BEIJING NEW BUILDING MATERIALS CO LTD — Type DBX-1.

BPB AMERICA INC — Types EGRG, ProRoc Type X, ProRoc Type C.

BPB CANADA INC — ProRoc Type C, ProRoc Type X or ProRoc Type Abuse-Resistant.

CANADIAN GYPSUM COMPANY — Type AR, C, IP-AR, IP-X1, IP-X2, IPC-AR, SCX, SHX, WRC, WRX.

G-P GYPSUM CORP, SUB OF

GEORGIA-PACIFIC CORP — Types 5, 9, C, DA, GPFS6.

LAFARGE NORTH AMERICA INC — Types LGFC2, LGFC2A, LGFC6, LGFC6A, LGFC-C, LGFC-C/A.

PABCO GYPSUM, DIV OF PACIFIC COAST

BUILDING PRODUCTS INC — Type C or PG-9.

PANEL REY S A — Type PRX.

SIAM GYPSUM INDUSTRY (SARABURI) CO LTD — Type EX-1

STANDARD GYPSUM L L C — Type SG-C

TEMPLE-INLAND FOREST PRODUCTS CORP — Type TG-C

UNITED STATES GYPSUM CO — Type AR, C, FRX-G, IP-AR, IP-X1, IP-X2, IPC-AR, SCX,

SHX, WRC or WRX.

USG MEXICO S A DE C V — Type AR, C, IP-AR, IP-X1, IP-X2, IPC-AR, SCX, SHX, WRC, WRX.

- 7A. **Gypsum Board*** — (As an alternate to Item 7) — 5/8 in. thick with square or tapered edges, applied vertically or horizontally with vertical joints centered over studs and staggered one stud cavity on opposite sides of studs. Horizontal edge joints and horizontal butt joints on opposite sides of studs need not be staggered or backed. For horizontal application, fastened to studs and runners with 1 in. long Type S-12 screws spaced 8 in. OC. For vertical application, fastened to studs with 1 in. long, Type S-12 screws spaced 8 in. OC along the vertical edges and 12 in. OC in the field, and fastened to the runners with screws spaced 8 in. OC.

CANADIAN GYPSUM COMPANY — Type AR, C, IP-AR, IP-X1, IP-X2, IPC-AR, SCX, SHX, WRC, WRX.

UNITED STATES GYPSUM CO — Type AR, C, FRX-G, IP-AR, IP-X1, IP-X2, IPC-AR, SCX, SHX, WRC or WRX.

USG MEXICO S A DE C V — Type AR, C, IP-AR, IP-X1, IP-X2, IPC-AR, SCX, SHX, WRC, WRX.

8. **Joints** — When taper edge gypsum board is used, joints covered with paper tape and joint compound. As an alternate, gypsum veneer plaster may be applied to the entire surface of Classified veneer baseboard with joints reinforced. When square-edge gypsum board is used, treatment of joints is optional.
9. **Vapor Retarder, Water Barrier or Weather Resistive Barrier** — (Optional — Not Shown) — As required.

*Bearing the UL Classification Mark